

# MULTI-FUNCTIONAL

## ES-200 Surfacer/Power Floor Planer (8")

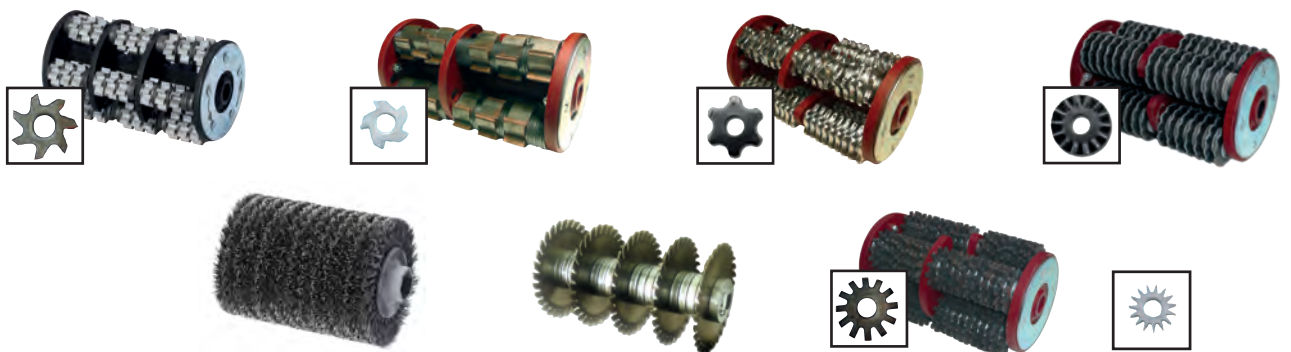


- **ROUGHENING** Concrete Surfaces, Asphalt
- **SCARIFYING** and Scabbling Concrete Floors
- **REMOVING** Coatings, Adhesives, Thermoplastic
- **GROOVING** Ramps, Barns, Walking Areas
- **ERASING** Traffic Lines, Paint Stripes
- **CLEANING** Grease Deposits, Cleaning out Cracks and Joints
- **BRUSHING** Stone, Terrazzo, Tile Floors
- **MILLING** Removing Mill Scale, De-rusting Ship Decks
- **RENOVATION** Wood Floors, Terrasses, removing Parquet Floors

Comfortable, safe, easy One-Man-Operation.

High Power to weight ratio.

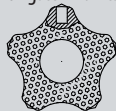
We offer a wide range of tools:





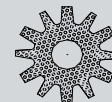
Scabbling, scarifying, grooving, removal of Concrete, General surface preparation.

**HMT-5.40**  
Tungsten Points



De-rusting, De-scaling, Removal of corrosion, mill-scale from steel surfaces. Removal of caked oil and grease.

**STR-4**  
Steel, Heattreated 4 mm



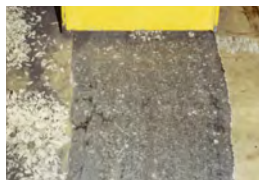
Removal of spillage, paint, thin coatings, contamination. Roughening walking areas.

**TSR-7.5**  
Full Tungsten



Removal of Traffic lines, Garage Markings, Crossings Deco-Marks of Thermo-plastics.

**TMO-7.11**  
Full Tungsten



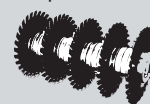
Floor Scraping, removal of thermoplastic, epoxy, thick coatings, gummy adhesives.

**TMO-5.22**  
Tungsten Blades



Cutting wood floors, Parquet before striping. Makes removing much easier.

**SZ-DISC**  
Special Steel



Removal of thin mill coatings, paint, impacted grease, oil. General cleaning.

**ET-4**  
Steel, Heattreated 4mm



Heavy Duty Drum Assembly for asphalt repair, Patch hole preparation and crack cleaning before patching.

**HMT-6.46**  
Tungsten Points



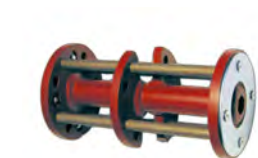
**Dust Port for Dust Control** - use with vacuum cleaner to keep dust out of the air



**Precision Depth Control** depth and pressure control of cutting drum

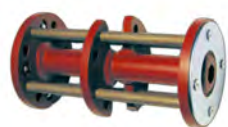


**Fast Tool-Drum Changing** Allows quick field replacement of drums and cutters on job site. Super performance and high productivity.



**Special Edging Accessory** attachment that allows grinding directly against wall and edges. Eliminates tiresome hand work.

- ✦ Sturdy steel construction
- ✦ Sealed ball bearings
- ✦ Lightweight for easy Transportation
- ✦ Powered by Quality and Experience
- ✦ No damage to surfaces
- ✦ Airtec's long term service and parts guarantee
- ✦ Low maintenance



**High Quality tool drum,** Special Steel, heattreated, gives extra extra Long working life. Double life drums. (2 x 4 openings for cutter shafts)

**Special Equipment:** Steel brush for de-rusting, Nylon brush, cleaning of wood floors, terraces

Specifications:	ES-200-EL	ES-200-B
<b>Motors:</b>	Electric Motor 1x 230 V, 1,85 Kw, 50 Hz 3x 400 V, 2,2 Kw, 50 Hz	Gasoline Motor Honda 4 Cycle Unit 5 HP 4 T
<b>Working width:</b>	200 mm (8")	200 mm (8")
<b>Weight:</b>	59 kg (120 lbs)	56 kg (120 lbs)
<b>Total height:</b>	920 mm (36")	920 mm (36")
<b>Total width:</b>	360 mm (34")	360 mm (34")